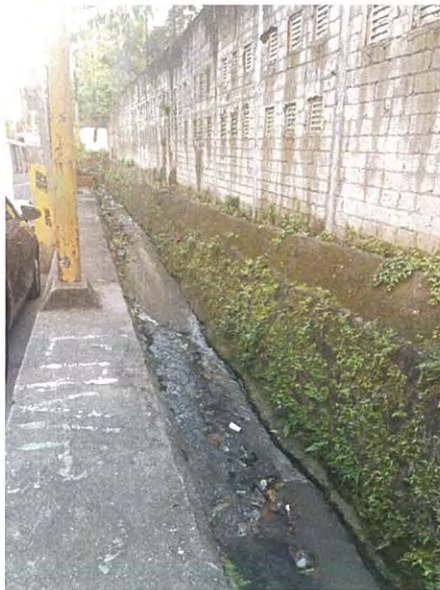


Existing Condition: Quingua Street



Existing Condition: Quingua Street



Jr



Salient Features of Consulting Services TOR

SCOPE OF SERVICES: The Consultant shall render the following services, among others:

- ✓ Conduct applicable detailed engineering surveys and investigations which includes, but not limited to: boundary/route survey, topographic survey, profile levelling, structural/ facilities and utilities survey , geotechnical investigation, and other field surveys and investigations necessary to carry out the Project
- ✓ Coordinate with the concerned utility providers regarding possible options to be considered in the design, removal/relocation of existing utilities that will be affected, and utility tapping points for the Project



Salient Features of Consulting Services TOR

- ✓ Undertake site development planning, detailed design of the architectural, structural, electrical, mechanical, sanitary, plumbing and drainage system, fire protection system, landscape component and removal/relocation of existing utilities to be affected;
- ✓ Provide the detailed design plans/drawings, cost estimates and reports, including any revisions and refinements



Salient Features of Consulting Services TOR

GENERAL REQUIREMENTS:

- Pedestrian Lane
- Bicycle Lane
- Stairs and Handrails
- Continuous Roofing
- Architectural Cladding for columns, beams, walls, deck, ceiling, stairs, others
- Non-Skid Floor Material/Finish and Tactile Blocks/Strip
- Way-Finding Signages
- Electrical System
- Mechanical System (Elevators and Escalators)
- Drainage, Sanitary, Plumbing with Plant Irrigation System
- Fire Protection System
- Maintenance and Utility Rooms
- Landscape component
- Removal/relocation/restoration of existing utilities and road infrastructures to be affected by the Project
- Provision of Cable Trays/Racks for affected telecom lines

Salient Features of Consulting Services TOR

RESPONSIBILITIES OF THE CONSULTANT: The Consultant shall perform the design services to the highest standards of professional and ethical competence and integrity:

- ✓ Undertake and provide the DAED of the project that conforms to the National Building Code and other laws and regulations;
- ✓ Accept full responsibility for the consulting services to be performed under the TOR including applicable warranties on quality and soundness of the design;
- ✓ Except with prior written approval of BCDA, it shall neither assign nor sub-contract any part of the professional services under the TOR to any person or firm



Salient Features of Consulting Services TOR

QUALIFICATION OF THE CONSULTANTS

- ✓ The Consultant (in case of a Joint Venture (JV), at least one of the JV partners) should be a reputable firm with at least ten (10) years of business operation in detailed architectural and engineering design
- ✓ The Consultant (in case of a JV, at least one of the JV partners) should have undertaken at least one (1) detailed architectural and engineering design of projects similar in nature for the last ten (10) years
- ✓ The key personnel who shall work for the project must meet the qualifications under the TOR.

Salient Features of Consulting Services TOR

SHORTLISTING OF BIDDERS: Shortlist shall consist of at most five (5) prospective bidders who will be entitled to submit bids, shall be based on the following criteria and rating

Criteria	Rating
1. Relevant Experience of the CONSULTANT	40%
2. Qualification of the Key Personnel to be assigned to the Project	50%
3. Current Workload Relative to Capacity	10%
Total	100%

The prospective bidders must pass the required minimum score of seventy percent (70%) to be shortlisted. Failure to meet the specified requirements in the shortlisting would result to a zero (0) rating for the specific criterion.

Salient Features of Consulting Services TOR

MANNING REQUIREMENT: The CONSULTANT shall provide a team of qualified specialists, support and administrative staff (not necessarily as listed below) with satisfactory experience in design projects

Key Personnel	Qualifications/Experience
Team Leader/Project Manager	<ul style="list-style-type: none"> • Must be a licensed Civil Engineer or Licensed Architect with at least 10 years of work experience • Was involved in at least 2 completed detailed design projects
<ul style="list-style-type: none"> ▪ Lead Architect ▪ Lead Structural Engineer ▪ Lead Geotechnical/Foundation Engineer ▪ Lead Geodetic Engineer ▪ Lead Electrical Engineer ▪ Lead Mechanical Engineer ▪ Lead Landscape Architect 	<ul style="list-style-type: none"> • Must have a license in their own profession with at least 5 years of work experience • Was involved in at least 1 completed detailed design project

Salient Features of Consulting Services TOR

MANNING REQUIREMENT: The CONSULTANT shall provide a team of qualified specialists, support and administrative staff (not necessarily as listed below) with satisfactory experience in design projects (*continued*)

Key Personnel	Qualifications/Experience
<ul style="list-style-type: none"> ▪ Lead Sanitary/Plumbing/ Drainage Engineer 	<ul style="list-style-type: none"> • Must have at least 5 years of work experience as Sanitary/plumbing/Drainage Engineer • Was involved in at least 1 completed detailed design project
<ul style="list-style-type: none"> ▪ Lead Quantity/Cost/Specifications Engineer 	<ul style="list-style-type: none"> • Must have at least 5 years of work experience as Quantity/Cost/Specifications Engineer • Was involved in at least 1 completed detailed design project

- Architect; Structural Engineer; Geotechnical/Foundation Engineer; Electrical Engineer; Mechanical Engineer; Sanitary/Plumbing/Drainage Engineer; Quantity/Cost/Specifications Engineer; CAD Operator 1; CAD Operator 2; and Survey Aide

Salient Features of Consulting Services TOR

APPROVED BUDGET FOR THE SERVICES: PhP8,232,000.00 inclusive of all applicable taxes and fees

PROJECT DURATION: 180 Calendar Days, reckoned from the date of the Notice to Proceed

MODE OF PAYMENT:

10%	Upon submission to and acceptance by BCDA of Inception Report
40%	Upon submission of draft detailed design plans and drawings, etc.
40%	Upon submission to and acceptance by BCDA of complete set of approved detailed design plans & drawings, etc.
10%	Submission of Final Report, Issuance of Certification of Completion & Sworn Statement for on-call services

End of Presentation