



BCDA
Bases Conversion and
Development Authority

Metro Manila Greenways Project

Procurement of Consulting Services for the Detailed Architectural and Engineering Design for the MMGP: Makati - BGC Segment Phase 1 – Elevated Walkway from MRT Buendia Station to BGC

PRE-ELIGIBILITY CONFERENCE

BAC for Consulting Services

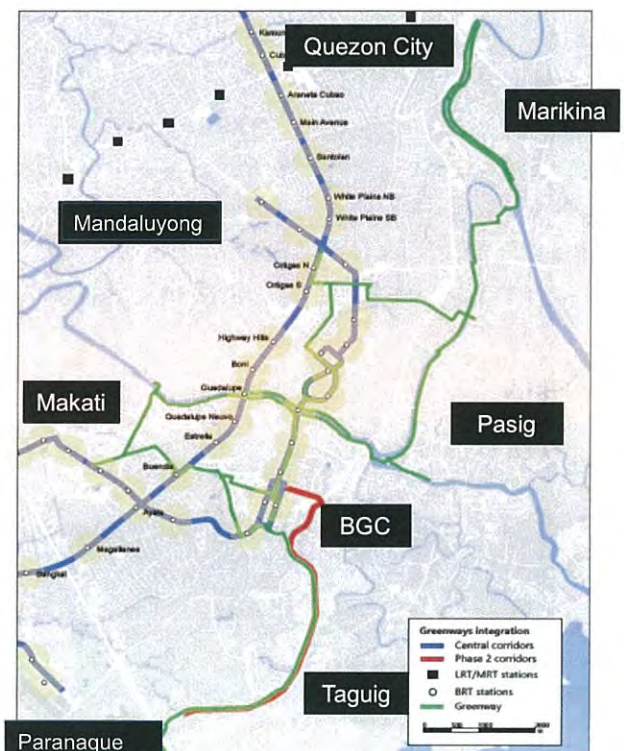
13 March 2019

Metro Manila Greenways

- Greenways are safe and convenient corridors for walking and cycling.
- Connects the cities of Quezon City, Marikina, Mandaluyong, Pasig, Taguig, Makati, and Paranaque.
- 120-km of greenway network
- **Components:** Walkways, bikeways, urban realm enhancement, and bridges and pedestrian connectivity



BCDA
Bases Conversion and
Development Authority



JL

Metro Manila Greenways Alignment as per ITDP Study



- Existing greenways
- Marikina River Greenway
- Ortigas Greenway
- Pasig River Greenway
- Greenfield Greenway
- BGC Greenway
- Makati Greenway
- C5 Greenway



ju

Project Objectives

Main Objectives:

1. Enhance the urban environment and the welfare of Metro Manila's residents and visitors by establishing high quality walkways, bikeways, and public spaces that can be used for improved mobility and recreation
2. Alleviate the plight of the commuting public by providing connections to and from mass transportation system corridors



Project Objectives

Specific Objectives:

1. Implement the BGC and portion of Makati Segment of the MMGP pursuant to the Metro Manila Greenways Conceptual Study by way of facilitating the acquisition of lots, civil works and other improvements needed within or contiguous to BCDA-owned or controlled lands and the resettlement or relocation of affected dwellers and/or informal settlers;
2. Supplement and/or enhance the existing pedestrian network system inside the Bonifacio Global City and its contiguous areas for improved mobility and connectivity;



Handwritten signature or initials.

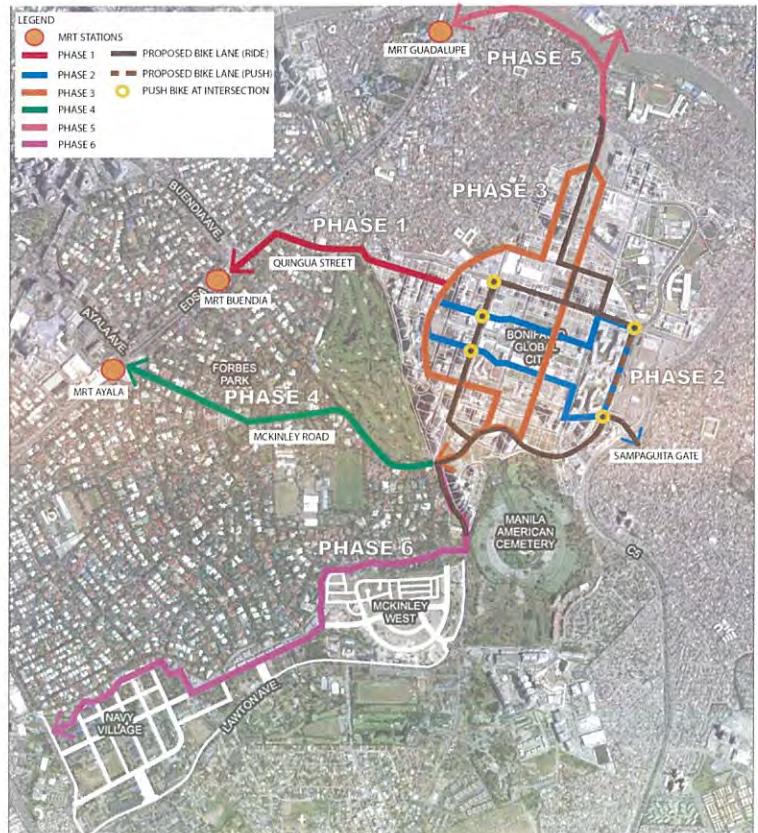
Project Objectives

Specific Objectives:

3. Provide an alternative route and means of transport for commuters, workers and visitors alike in going to and from Bonifacio Global City and certain areas of Makati City; and
4. Promote and encourage a healthy, non-sedentary lifestyle and general well-being through walking and biking by providing spaces where the public may utilize for such activities.



Makati - BGC Greenways Conceptual Plan



jk

Phase 1 Alignment

- MRT STATION
- ELEVATED WALKWAY
- WALKWAY ACCESS
- LINEAR PARK
- FLYOVER
- ROAD



Phase 1 Alignment

TOTAL LENGTH	+/- 1098.34 M
WIDTH ALONG EDSA	+/- 8.75 M
WIDTH ALONG QUINGUA	+/- 4.90 M
SURFACE AREA @ EDSA	+/- 3730.55 SQM
SURFACE AREA @ QUINGUA	+/- 3963.29 SQM
TOTAL SURFACE AREA	+/- 7693.83 SQM



- LEGEND:
- ENTRY/EXIT POINTS
 - ELEVATED WALKWAY
 - FORBES PARK
 - MRT-BUENDIA STATION
 - FLYOVER
 - EDSA
 - WALKWAY ON STREET LEVEL



1 BGC GREENWAYS
201 SITE DEVELOPMENT PLAN
SCALE: 1:4000 MTS



Existing Condition: EDSA MRT Buendia



Existing Condition: EDSA MRT Buendia



Jc

Existing Condition: EDSA MRT Buendia



Existing Condition: EDSA MRT Buendia



je

Existing Condition: EDSA to Quingua



Existing Condition: Quingua Street

