

Bids and Awards Committee for Consulting Services

**Bidding for the Construction Management and Supervision (CMS) of
the Airport (CIA) to New Clark City (NCC) Access Road - Phase 1**

**Bid Bulletin No. 03
16 July 2018**

Please be informed of the following clarifications on questions/queries that were raised during the Pre-Bid Conference on subject bidding held on 11 July 2018. This Bid Bulletin shall form an integral part of the Bid Documents.

REFERENCE	QUESTION/CLARIFICATION	ANSWER
Section VII. Bidding Forms, Financial Proposal Forms (FPF)	Clarification on FPF No. 5: Reimbursables per Activity	FPF No. 5 Reimbursable (Not Applicable)
Terms of Reference. Deliverables	Clarification on how many accomplishment reports should be submitted.	The number of reports to be submitted shall be discussed during the implementation of the project.
Terms of Reference. Project Duration	Can the bidders be sent a copy of the construction schedule (S-Curve)?	The BAC will provide the proposed construction schedule (Annex A).
Section VII. Bidding Forms, Technical Proposal Forms	Are electronic signatures allowed for the curriculum vitae (CV)?	No. Since the CVs are required to be notarized, electronic signatures will not suffice because the notary should require the person to sign the document in his presence. If a document is not required to be notarized, the BAC-C can accept electronic signature.
	Are copies of the CV for the support staff required to be submitted together with the Bid Docs?	Only the key staff members' CV are required.
	Clarification on Technical Proposal Form (TPF) 5 Page 79 footnote re: relationship with Procuring Entity, officers, BAC members, among others.	The Omnibus Sworn Statement and the TPF are different. Please refer to Annex B for the revised format of TPF 5.
Section II. Eligibility Documents	Clarification on format of the envelope	Two envelopes shall be submitted by the bidders: 1. One Original containing: a. Original Technical Proposal Envelope b. Original Financial Proposal Envelope 2. Copy 1 containing: a. Copy 1 Technical Proposal Envelope b. Copy 1 Financial Proposal Envelope
	Request for a location map of the project	Please refer to Annex C

Annex A - Construction Schedule from the Designer
Annex B - Revised TPF 5. Team Composition and Task
Annex C - Location Map

The clarifications herein issued effectively amend, modify or revise provisions of the TOR/Bid Documents, which are inconsistent or contradictory thereto.

For the information of all concerned.

BIDS AND AWARDS COMMITTEE FOR CONSULTING SERVICES

By:


ATTY. JOANNA EILEEN M. CAPONES
Vice-Chairperson

Construction Schedule of Airport to New Clark City Access Road

Item of Works, Part:

Item of Works, Part:	Weight	Duration	18 Months																		
			1	2	3	4	5	6	7	8	9	10	11	12	13	14	15	16	17	18	
A. Facilities for the Engineer	0.38%	18	0.02%	0.02%	0.02%	0.02%	0.02%	0.02%	0.02%	0.02%	0.02%	0.02%	0.02%	0.02%	0.02%	0.02%	0.02%	0.02%	0.02%	0.02%	
B. Other General Requirements	0.23%	18	0.01%	0.01%	0.01%	0.01%	0.01%	0.01%	0.01%	0.01%	0.01%	0.01%	0.01%	0.01%	0.01%	0.01%	0.01%	0.01%	0.01%	0.01%	
C. Earthworks	3.85%	6	0.64%	0.64%	0.64%	0.64%	0.64%	0.64%	0.64%	0.64%	0.64%	0.64%	0.64%	0.64%	0.64%	0.64%	0.64%	0.64%	0.64%	0.64%	
D. Sub-Base and Base Course	0.85%	11	0.08%	0.08%	0.08%	0.08%	0.08%	0.08%	0.08%	0.08%	0.08%	0.08%	0.08%	0.08%	0.08%	0.08%	0.08%	0.08%	0.08%	0.08%	
E. Surface Courses	5.10%	11	0.46%	0.46%	0.46%	0.46%	0.46%	0.46%	0.46%	0.46%	0.46%	0.46%	0.46%	0.46%	0.46%	0.46%	0.46%	0.46%	0.46%	0.46%	
F. Bridge Construction	74.40%	18	4.13%	4.13%	4.13%	4.13%	4.13%	4.13%	4.13%	4.13%	4.13%	4.13%	4.13%	4.13%	4.13%	4.13%	4.13%	4.13%	4.13%	4.13%	
G. Drainage and Slope Protection Structures	6.07%	9	0.67%	0.67%	0.67%	0.67%	0.67%	0.67%	0.67%	0.67%	0.67%	0.67%	0.67%	0.67%	0.67%	0.67%	0.67%	0.67%	0.67%	0.67%	
H. Miscellaneous Structures	1.22%	11	0.11%	0.11%	0.11%	0.11%	0.11%	0.11%	0.11%	0.11%	0.11%	0.11%	0.11%	0.11%	0.11%	0.11%	0.11%	0.11%	0.11%	0.11%	
J. Streetlights & Area Lighting	1.44%	9	0.16%	0.16%	0.16%	0.16%	0.16%	0.16%	0.16%	0.16%	0.16%	0.16%	0.16%	0.16%	0.16%	0.16%	0.16%	0.16%	0.16%	0.16%	
K. Street Landscape	6.48%	8	0.81%	0.81%	0.81%	0.81%	0.81%	0.81%	0.81%	0.81%	0.81%	0.81%	0.81%	0.81%	0.81%	0.81%	0.81%	0.81%	0.81%	0.81%	
	100.00%																				
Sum	4.81%		4.81%	4.81%	5.56%	5.67%	5.67%	6.13%	5.67%	6.13%	5.49%	5.49%	5.65%	5.65%	6.46%	5.79%	5.79%	5.71%	5.60%	5.14%	4.98%
Cumu	4.81%		9.62%	15.18%	20.85%	26.52%	32.65%	38.14%	43.64%	49.29%	54.94%	61.40%	67.19%	72.98%	78.69%	84.29%	89.89%	95.02%	100.00%	100.00%	100.00%

for

TPF 5. Team Composition and Task

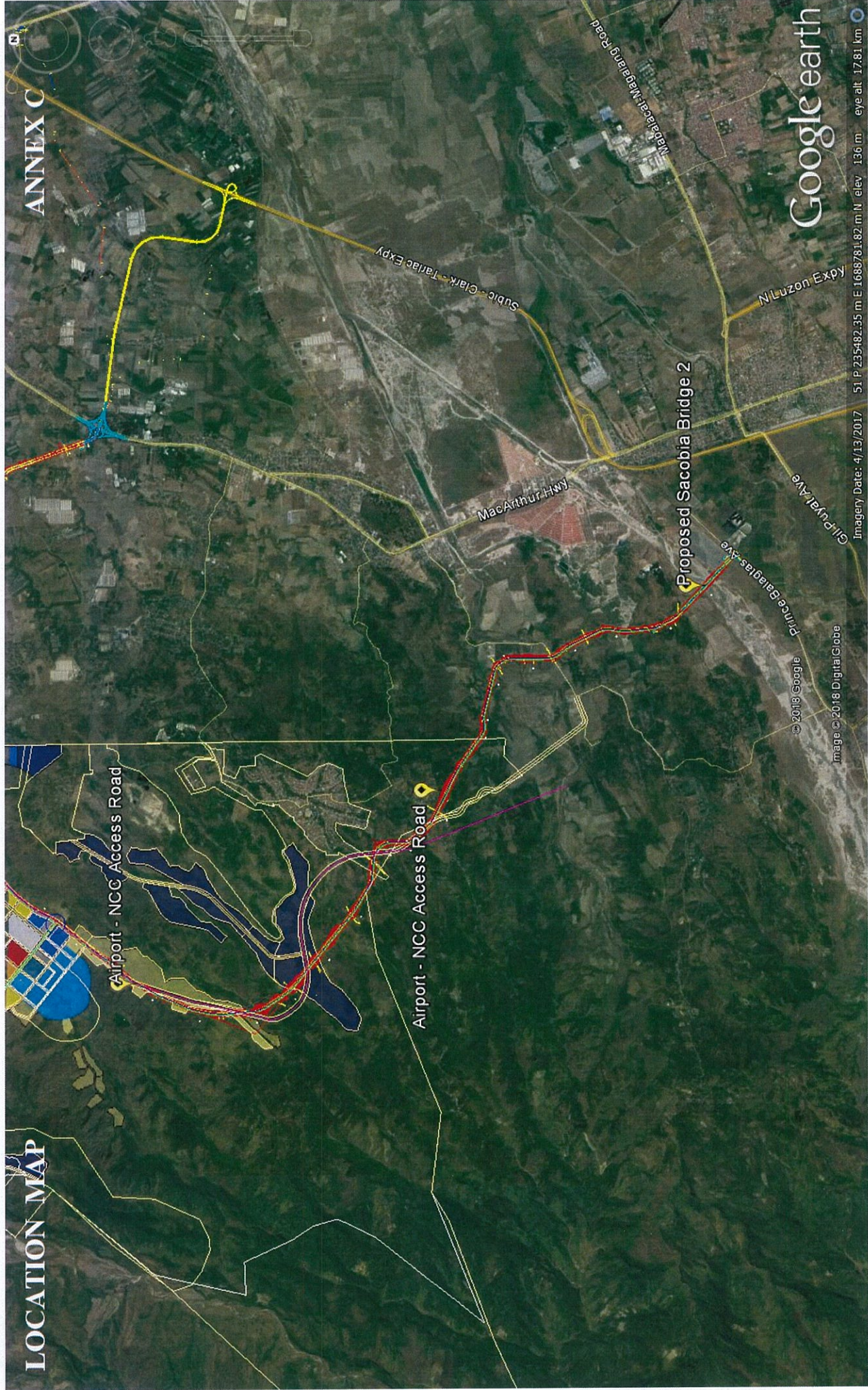
I. Key Staff				
	Name	Position	Task	Relationship*
1		Team Leader/Project Manager		
2		Deputy Project Manager		
3		Sr. Highway Engineer		
4		Sr. Bridge Engineer		
5		Sr. Materials Engineer II (DPWH Accredited)		
6		Sr. Drainage/Hydraulic Engineer		
7		Sr. Structural Engineer		
8		Sr. Quantity Surveyor		
9		Sr. Geodetic Engineer		
10		Professional Electrical Engineer		
11		Sr. Landscape Architect		

B. Technical Support Staff				
	Name	Position	Task	Relationship*
1		Jr. Bridge Engineer		
2		Jr. Structural Engineer		
3		Jr. Drainage/Hydraulic Engineer		
4		Jr. Highway Engineer		
5		Jr. Electrical Engineer		
6		Jr. Geodetic Engineer		
7		Jr. QA/QC Engineer		
8		Jr. Quantity Surveyor		
9		Site/Field Engineer		
10		Jr. Architect		
11		CAD Operator		

C. Administrative Support Staff				
		Position		
1		Administrative Officer		
2		Secretary		
3		Encoder		
4		I.T. Specialist		
5		Document Specialist		
6		Messenger		
7		Utility Personnel		

*Where applicable, indicate relationships among the Consultant and any partner and/or subconsultant, and relationship to the Procuring Entity, the funding source and other parties or stakeholders, if any, involved in the project.

fr



for