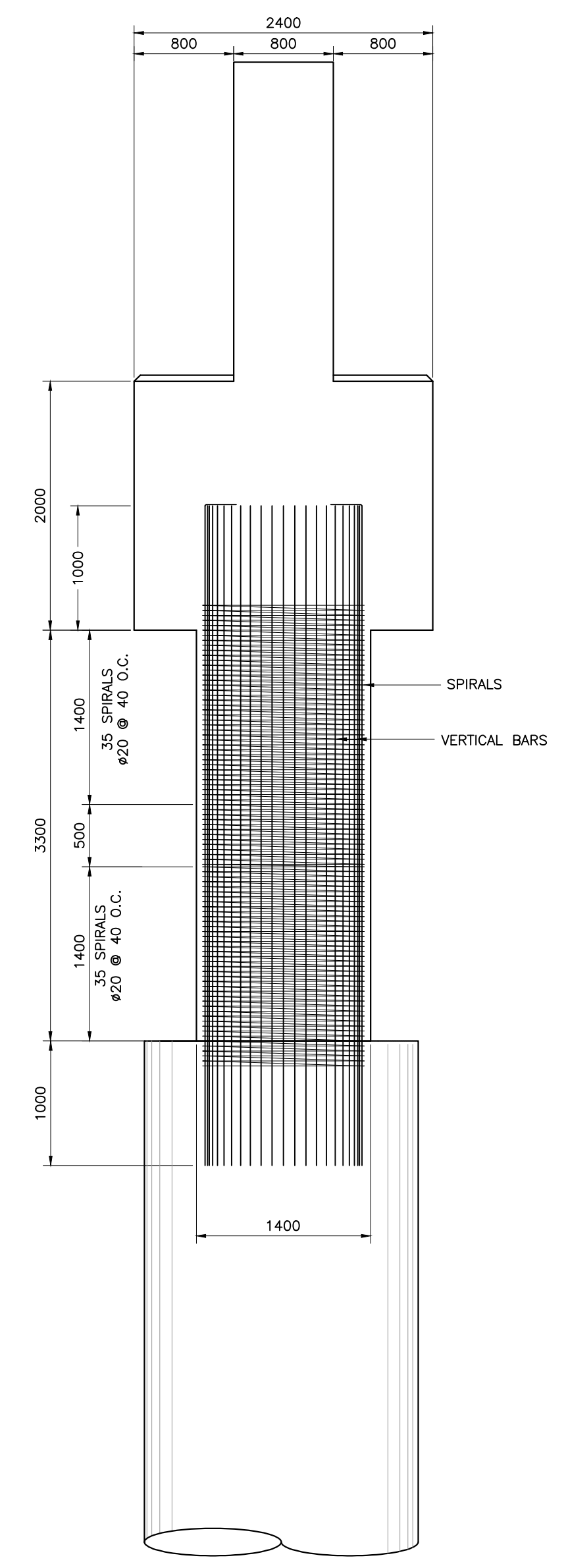
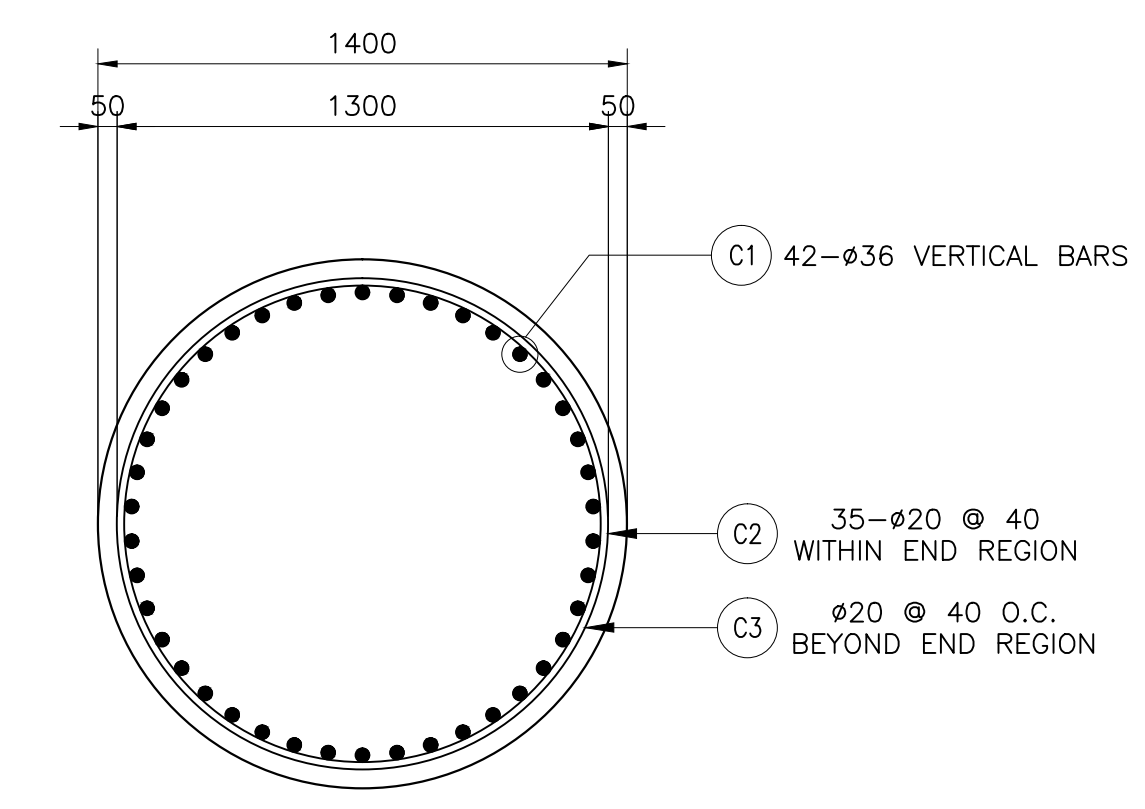



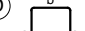
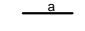



- CP1 28-ø36 TOP BARS
- CP3 8-ø25 SIDE BARS E.F.
- CP6 ø16 @ 300 O.C. STIRRUPS
- CP2 28-ø36 BOTTOM BARS (BUNDLE OF 2)
- C2 35-ø20 @ 40 WITHIN END REGION
- C1 42-ø36 VERTICAL BARS
- C3 ø20 @ 40 O.C. BEYOND END REGION
- C2 35-ø20 @ 40 WITHIN END REGION
- C1 42-ø36 VERTICAL BARS
- C3 ø20 @ 40 O.C. BEYOND END REGION
- C2 35-ø20 @ 40 WITHIN END REGION



NOTE:
PURSUANT TO SECTION 4 OF ANNEX "A" OF THE REVISED IMPLEMENTING RULES AND REGULATIONS OF RA 9184, APPROVED BY THE AUTHORIZED DPWH OFFICIALS OF DETAILED ENGINEERING SURVEYS AND DESIGNS UNDERTAKEN BY THE CONSULTANTS NEITHER DIMINISHES THE RESPONSIBILITY OF THE LATTER FOR THE TECHNICAL INTEGRITY OF THE SURVEYS AND DESIGNS NOR TRANSFER ANY PART OF THAT RESPONSIBILITY TO THE APPROVING OFFICIALS.
THE DESIGN CONSULTANT SHALL BE HELD FULLY RESPONSIBLE FOR THE FAILURE OF THE FACILITIES/STRUCTURES DUE TO FAULTY DESIGN EXCEPT FOR THE CHANGES MADE WITHOUT THE CONFORMITY OF THE CONSULTANT.

ENGR. ALBERTO C. CANETE
TEAM LEADER

SCHEDULE OF REINFORCEMENTS FOR PIER 1 COLUMN, COPING AND SHEAR BLOCK																		
BAR BENDING DIAGRAM	REINFORCING STEEL BARS				ALL DIMENSIONS ARE OUT TO OUT OF REBARS						TYPE	LOCATION	BAR LENGTH (m)	TOTAL LENGTH (m)	UNIT WEIGHT (kg/m)	TOTAL WEIGHT (kg)	CONCRETE VOLUME (cu.m)	REMARKS
	MARK	SIZE (mm)	SPACING (mm)	QUANTITY	a	b	c	d	e	f								
(A) 	C1	36	AS SHOWN	42	5.3	0.5					A	COLUMN	6.3	264.60	7.99632	2116	6	QUANTITY FOR ONE (1) COLUMN ONLY
(B) 	C2	20	40	70	4.4	0.2					F		4.6	322.00	2.468	795		
	C3	20	40	13	4.4	0.2					F		4.6	57.50	2.468	142		
	CP1	36	AS SHOWN	28	29	0.5					A	COPING	30	840.00	7.99632	6717	221	
(C) 	CP2	36	AS SHOWN	28	29	0.5					A		30	840.00	7.99632	6717		
	CP3	25	AS SHOWN	14	29	0.2					A		29.4	411.60	3.85625	1588		
(D) 	CP4	36	AS SHOWN	8	29	0.5					A		30	240.00	7.99632	1920		
	CP5	25	300	16	29	0.2					A		29.4	470.40	3.85625	1814		
(E) 	CP6	16	300	97	2.3	1.9	2.3	1.9	0.15	0.15	B		8.7	843.90	1.57952	1333		
	CP6'	16	300	97	0.7	3.9	0.7	3.9	0.15	0.15	B		9.5	921.50	1.57952	1456		
(F) 	CP6''	16	300	194	0.2	1.9	0.2				A		2.3	446.20	1.57952	705		
GRAND TOTAL													Grade 60 bar		34462 Kgs	239 cu.m		