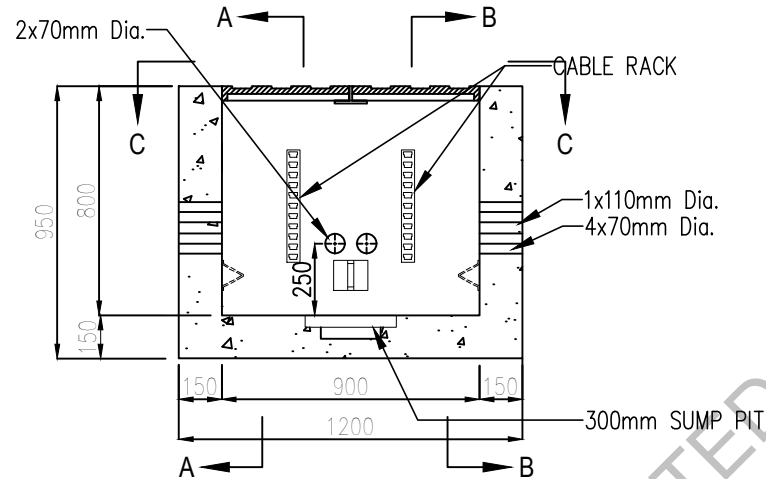


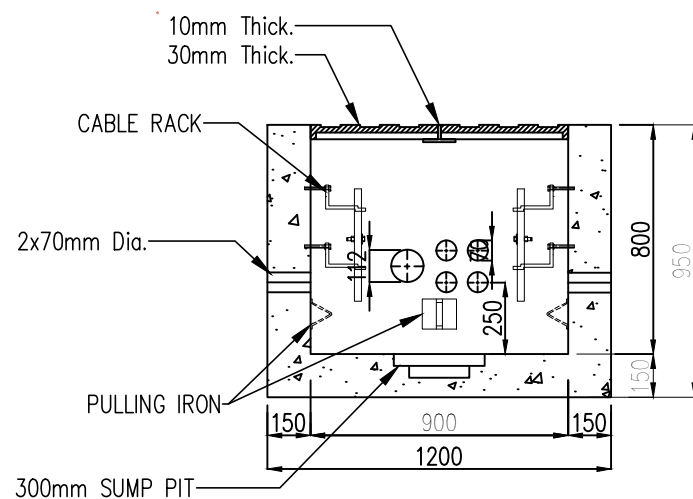
SECTION A-A SOUTH WALL

SCALE: NTS



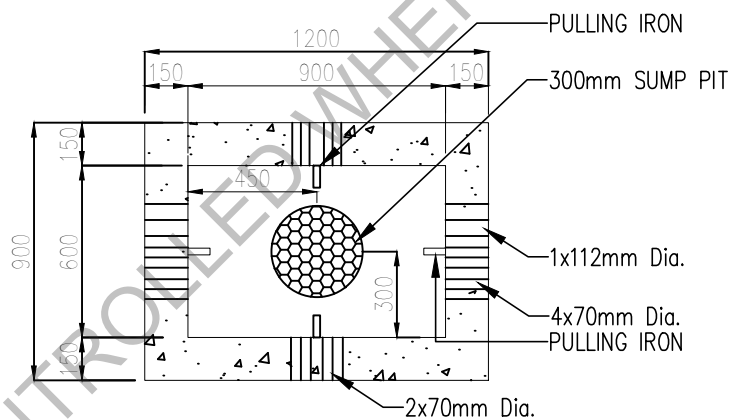
ELEVATION

SCALE: NTS



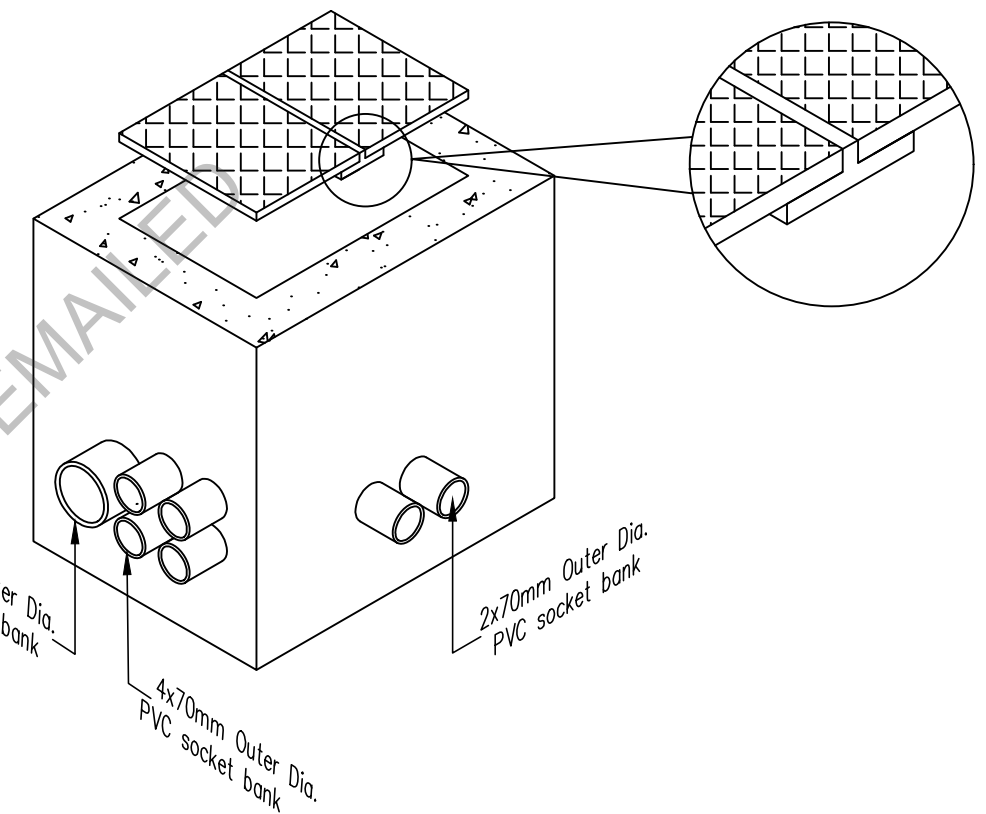
SECTION B-B NORTH WALL

SCALE: NTS



SECTION C-C

SCALE: NTS

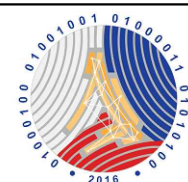


ISOMETRIC VIEW

SCALE: NTS

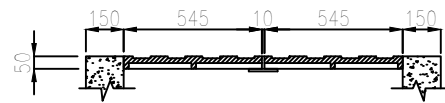
NOTE:

1. ASTM C478-14.
2. ASTM D345 @ 28 Days.
3. ASTM A615 Grade 60
4. CAST IRON CASTING: ASTM A-48 Class 30/35.
5. LOADING DESIGN: H-20 per AASHTO HB 14.
6. HAND-HOLES SHALL HAVE SUMP HOLES.
7. HAND-HOLES SHALL BE EQUIPPED WITH PULLING EYES OR PULLING IRON.
8. HAND-HOLES SHALL HAVE BRACKET SUPPORTS.
9. HAND-HOLES SHALL HAVE CAST IRON COVERS.

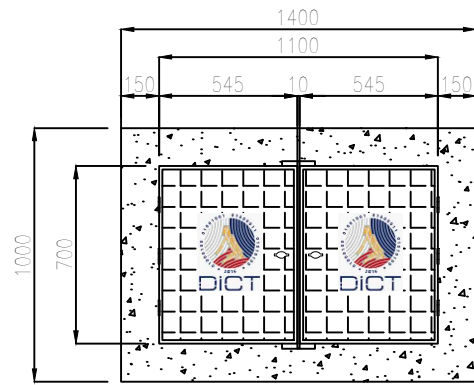


REPUBLIC OF THE PHILIPPINES
DEPARTMENT OF INFORMATION AND
COMMUNICATIONS TECHNOLOGY

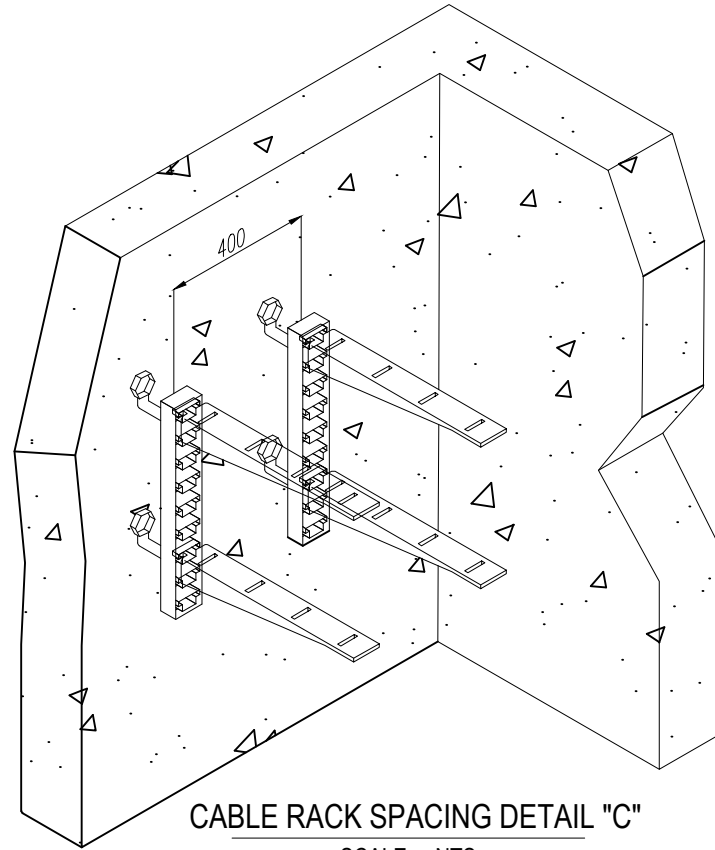
PROJECT TITLE:	PREPARED BY:	APPROVED BY:	SHEET CONTENT/S:	SHEET NO.:
DICT NATIONAL BROADBAND PROGRAM	HONESTO D. HIZO Consultant		DICT PROPOSED TWO COVER HANDHOLE DETAILS (TYPE 2)	1 2
LOCATION:	DATE SIGNED:	DATE SIGNED:	SCALE: NOT TO SCALE	---



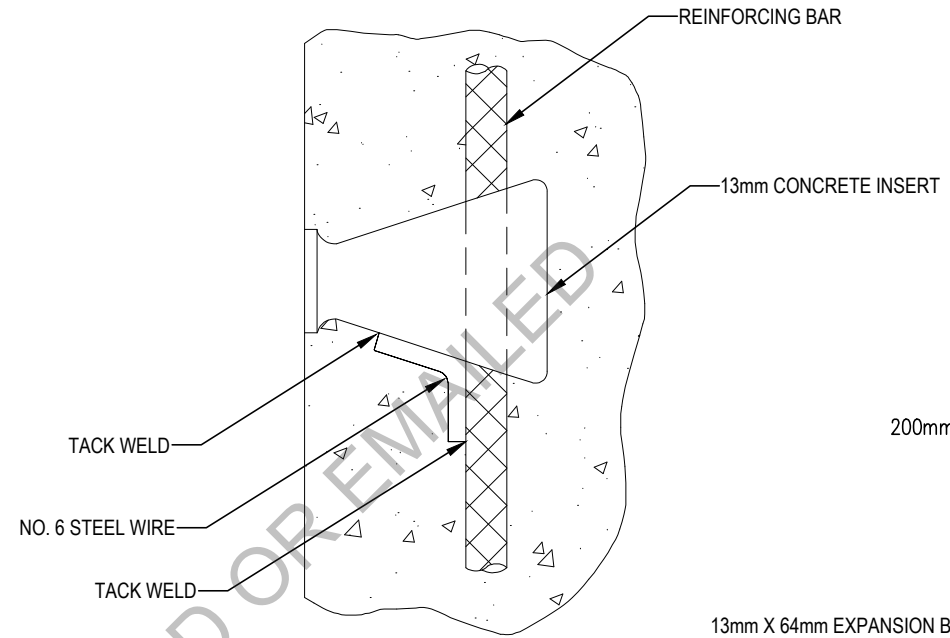
SECTION VIEW
SCALE: NTS



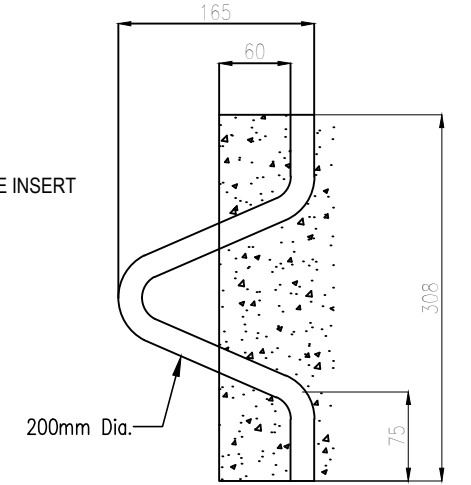
PLAN VIEW
SCALE: NTS



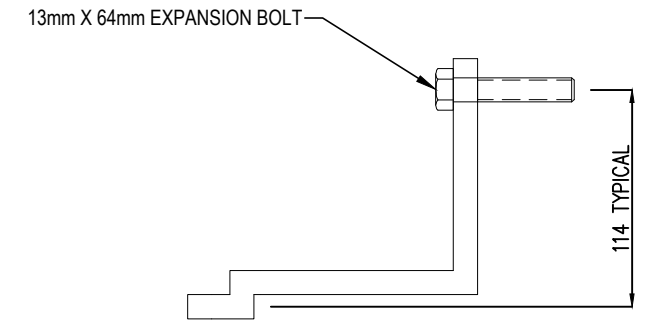
CABLE RACK SPACING DETAIL "C"
SCALE: NTS



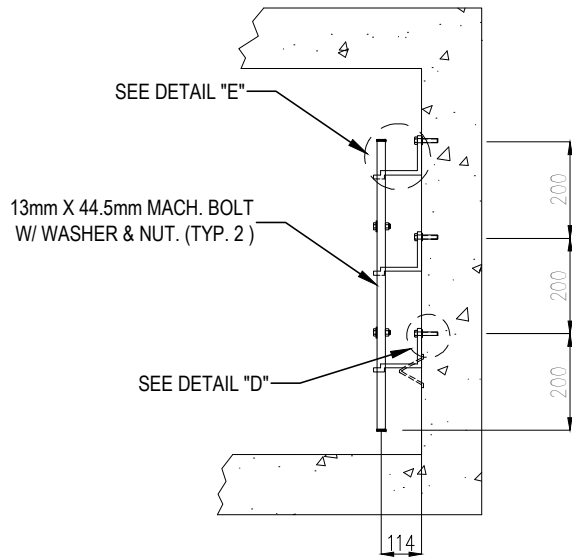
CONCRETE INSERT DETAIL "D"
SCALE: NTS



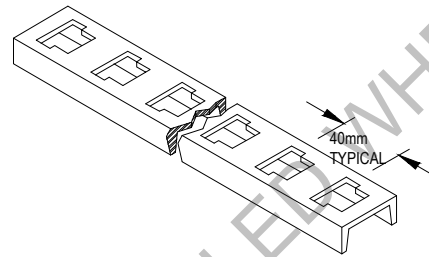
PULLING IRON
SCALE: NTS



CABLE RACK SUPPORT DETAIL "E"
SCALE: NTS

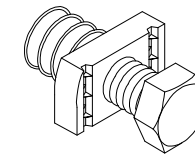


CABLE RACK MOUNTING DETAIL "C"
SCALE: NTS



GALVANIZED CUT RACKING
SCALE: NTS

HANDHOLE:
22 HOLE - 908.05mm (35 3/4")
NOTE: USE HOT DIPPED GALVANIZED CUT RACKING
12.7mm (1/2") NUT
2.7mm (1/2") x 31.75mm (1 1/4")
PLATED CAP SCREW
(AS NECESSARY TO ACCOMODATE RACKING)



GALVANIZED SPRING NUT AND SCREW
SCALE: NTS

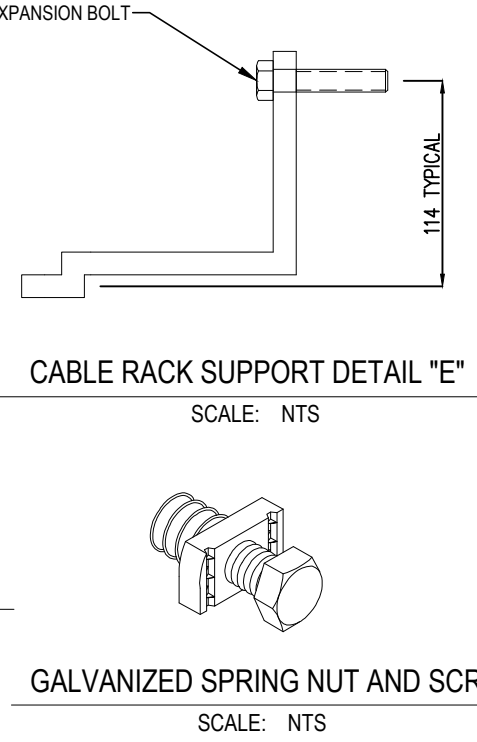
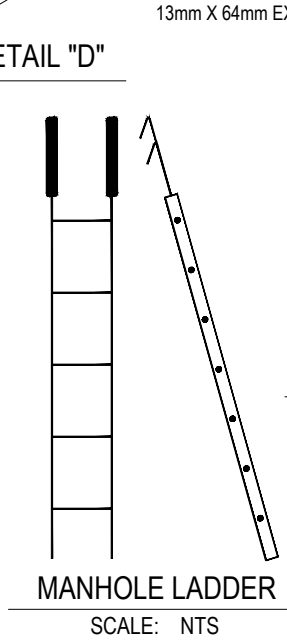
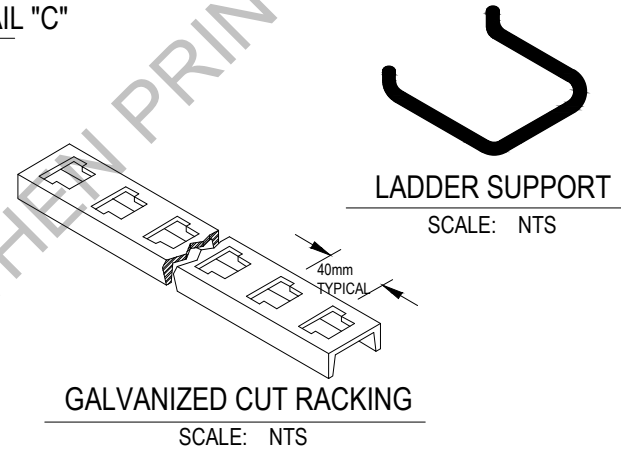
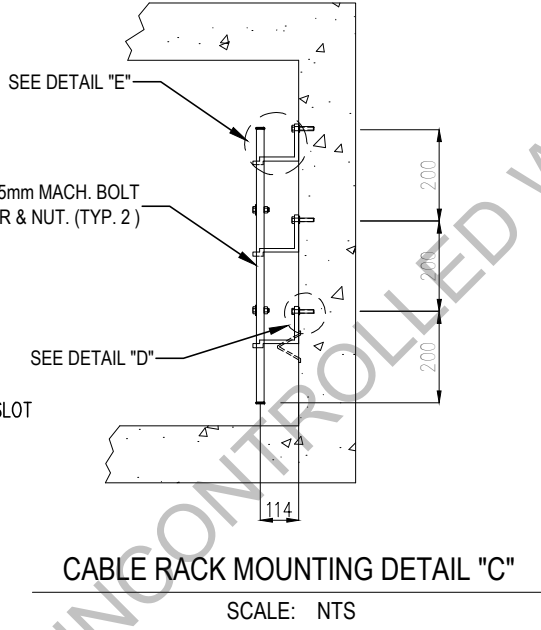
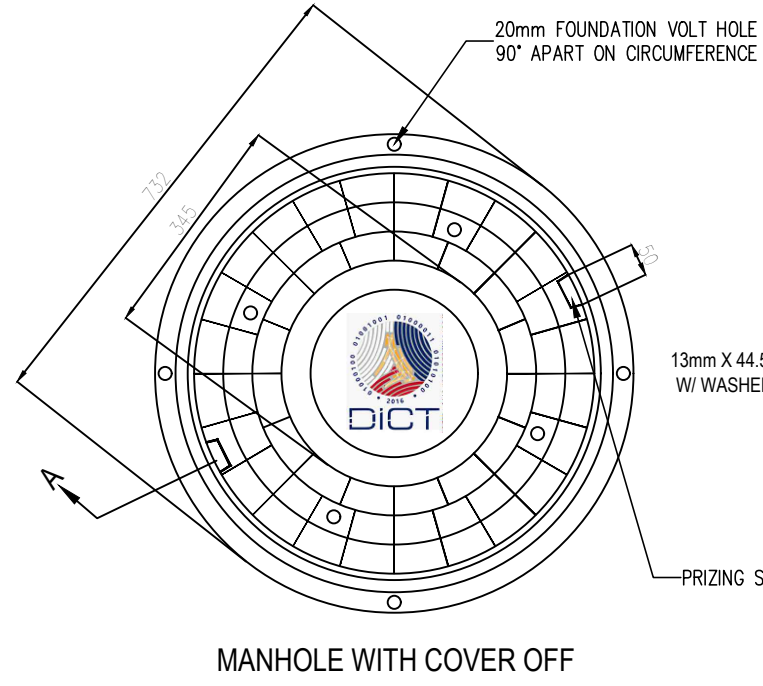
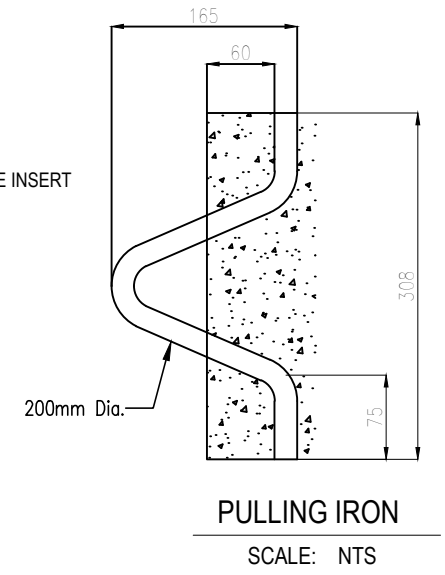
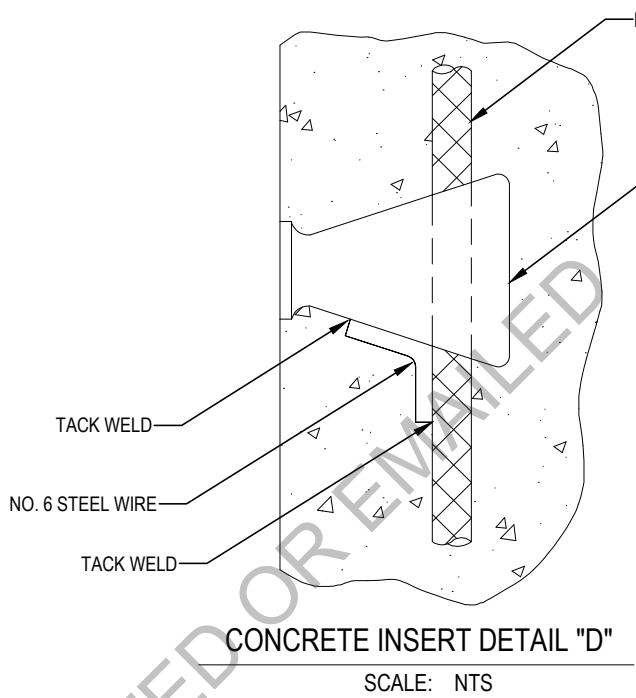
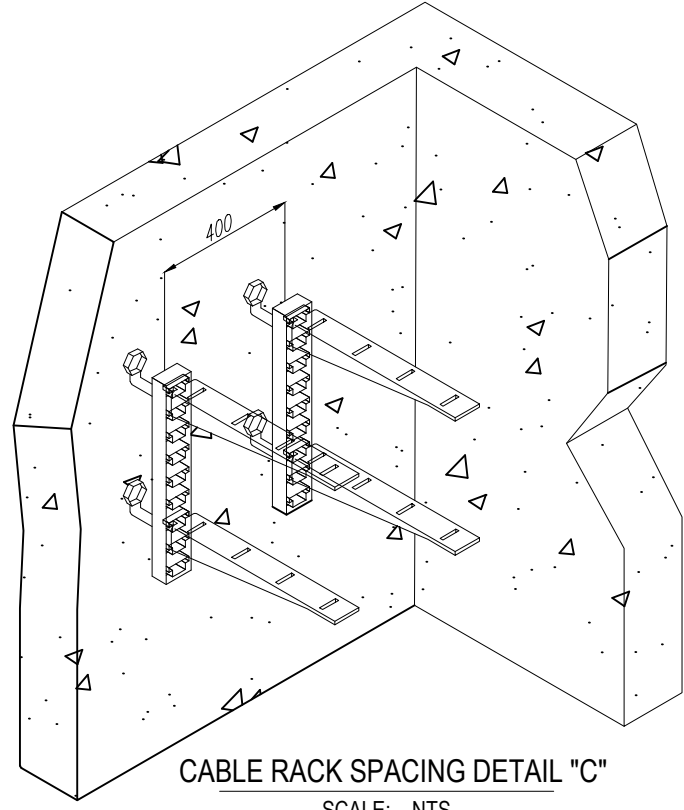
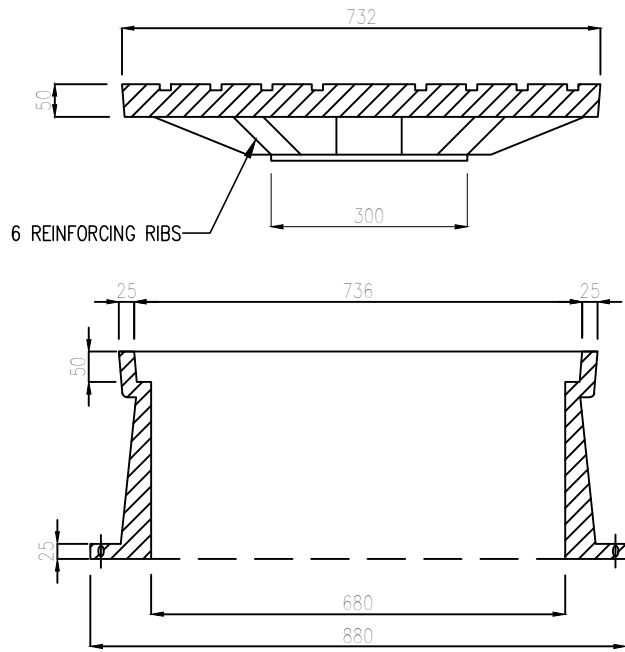
NOTE:
FOR CABLE RACK
1. LOAD RATED = 300 LBS.
2. 4 PCS. PRE INSTALLED PER RACK.
3. USE HOT DIPPED GALVANIZED CABLE SUPPORT ARMS.

NOTE:
1. MINIMUM PULL IRONS SHOWN. ADD ADDITIONAL PULL IRONS AS DEEMED NECESSARY.
2. NUMBER, SIZE AND LOCATION OF HOLES WILL DIFFER BASED ON ACTUAL IMPLEMENTATION REQUIREMENTS.
3. THIS DRAWING IS NOT A CONSTRUCTION DRAWING. IT IS INTENDED TO SHOW INTERNAL MINIMUM DIMENSIONS, RACKING AND OTHER TYPICAL FEATURES.
4. NO DETAIL "B" SHOWN.



REPUBLIC OF THE PHILIPPINES
DEPARTMENT OF INFORMATION AND
COMMUNICATIONS TECHNOLOGY

PROJECT TITLE:	PREPARED BY:	APPROVED BY:	SHEET CONTENT/S:	SHEET NO.:
DICT NATIONAL BROADBAND PROGRAM	HONESTO D. HIZO Consultant		DICT PROPOSED TWO COVER HANDHOLE DETAILS (TYPE 1)	2 2
LOCATION:	DATE SIGNED:	DATE SIGNED:	SCALE: NOT TO SCALE	---

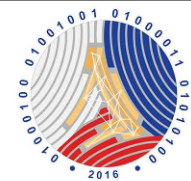
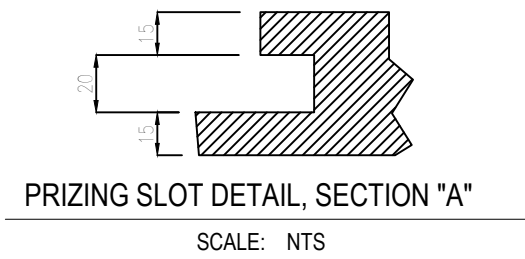


GALVANIZED CUT RACKING
SCALE: NTS

MANHOLE:
22 HOLE - 908.05mm (35 3/4")
NOTE: USE HOT DIPPED GALVANIZED CUT RACKING
12.7mm (1/2") NUT
2.7mm (1/2") x 31.75mm (1 1/4")
PLATED CAP SCREW
(AS NECESSARY TO ACCOMMODATE RACKING)

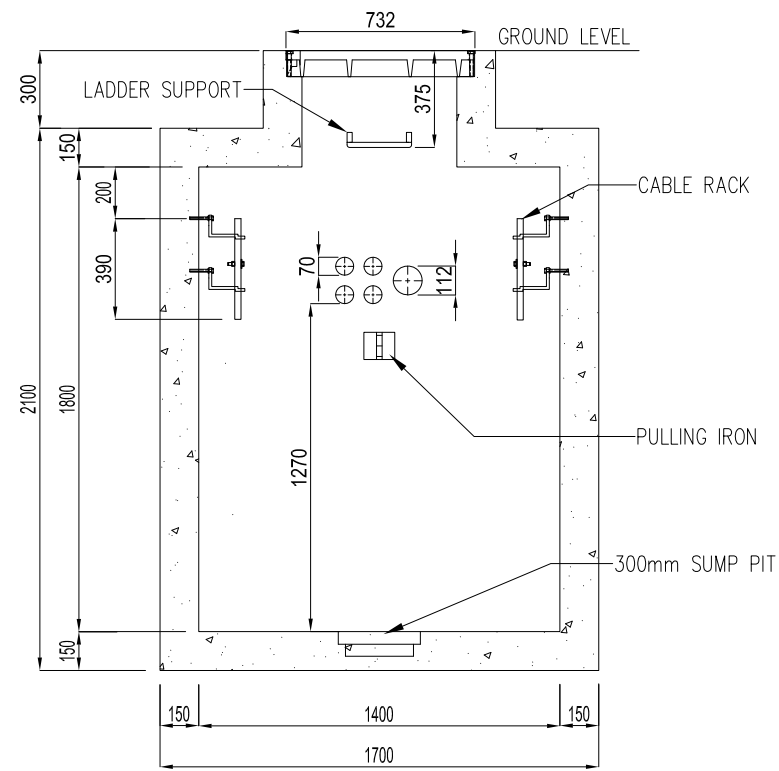
NOTE:
FOR CABLE RACK
1. LOAD RATED = 300 LBS.
2. 4 PCS. PRE INSTALLED PER RACK.
3. USE HOT DIPPED GALVANIZED CABLE SUPPORT ARMS.

NOTE:
1. MINIMUM PULL IRONS SHOWN. ADD ADDITIONAL PULL IRONS AS DEEMED NECESSARY.
2. NUMBER, SIZE AND LOCATION OF HOLES WILL DIFFER BASED ON ACTUAL IMPLEMENTATION REQUIREMENTS.
3. THIS DRAWING IS NOT A CONSTRUCTION DRAWING. IT IS INTENDED TO SHOW INTERNAL MINIMUM DIMENSIONS, RACKING AND OTHER TYPICAL FEATURES.
4. NO DETAIL "B" SHOWN.

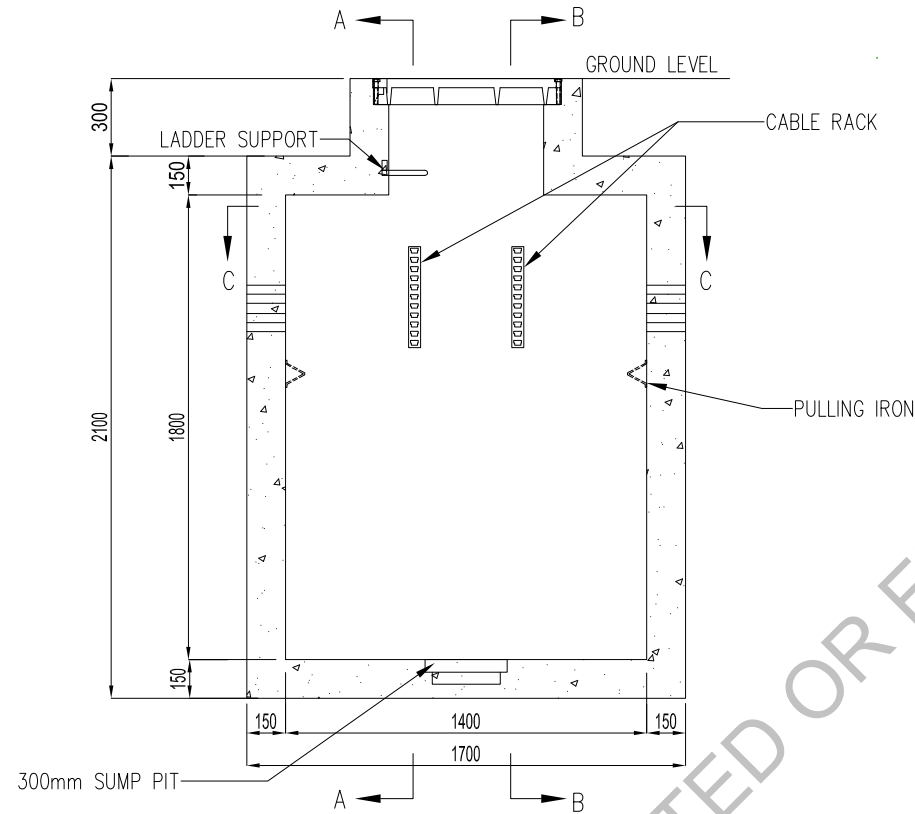


REPUBLIC OF THE PHILIPPINES
DEPARTMENT OF INFORMATION AND
COMMUNICATIONS TECHNOLOGY

PROJECT TITLE:	PREPARED BY:	APPROVED BY:	SHEET CONTENT/S:	SHEET NO.:
DICT NATIONAL BROADBAND PROGRAM	HONESTO D. HIZO Consultant		DICT PROPOSED MANHOLE DETAILS (TYPE B)	2 2
LOCATION:	DATE SIGNED:	DATE SIGNED:	SCALE: NOT TO SCALE	----



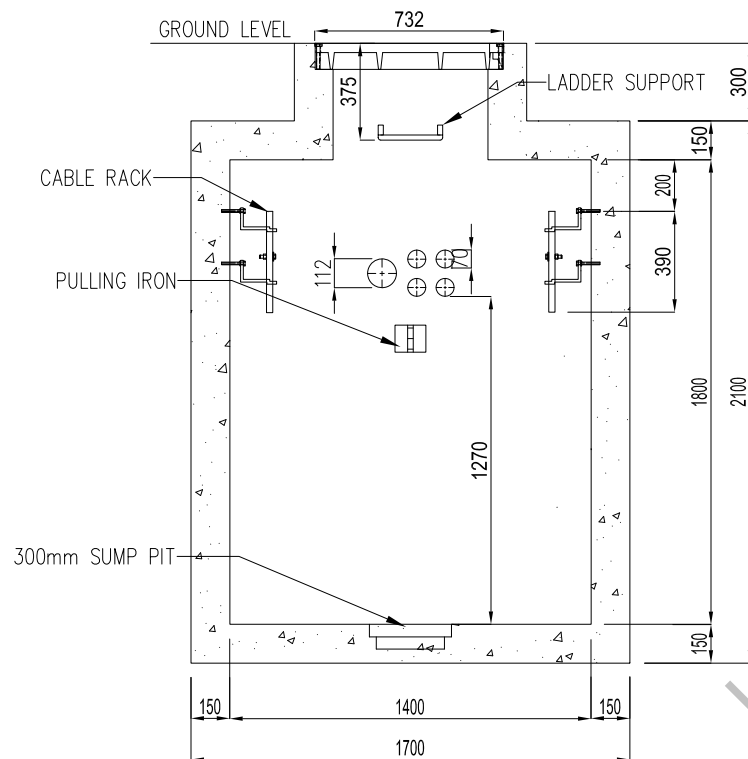
SECTION A-A SOUTH WALL
SCALE: NTS



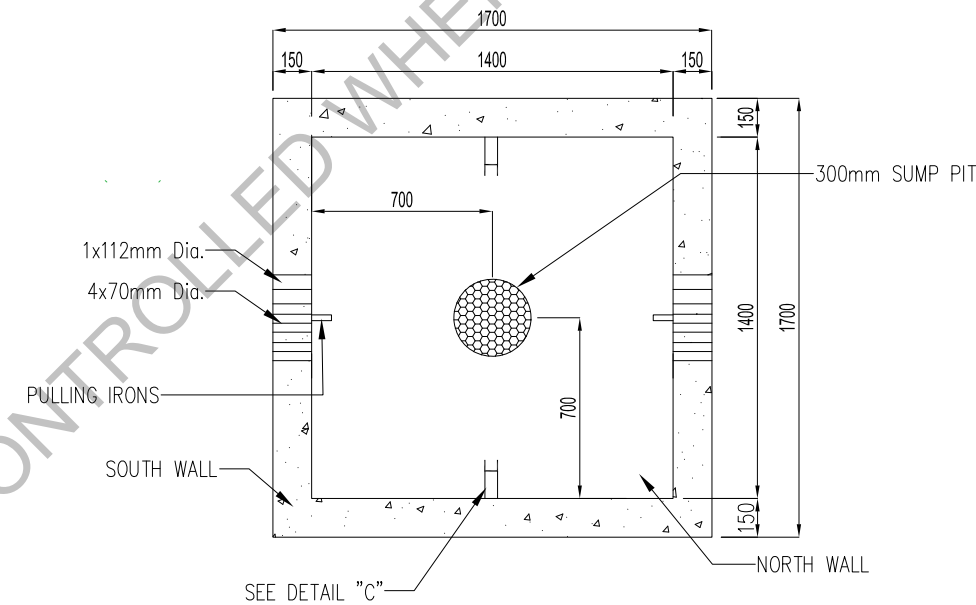
ELEVATION
SCALE: NTS

NOTE:

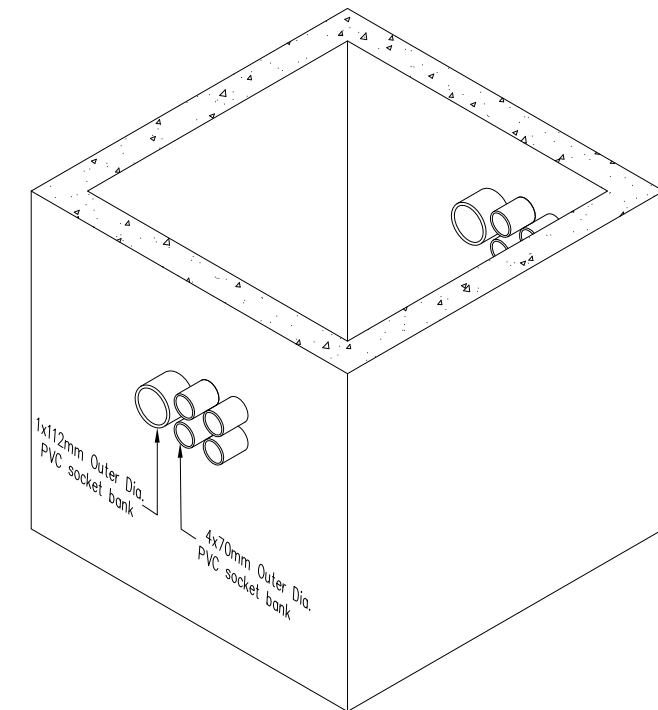
1. DRAWING NOT TO SCALE.
2. ALL DIMENSION ARE IN MILLIMETER.
3. MINIMUM CONCRETE CYLINDER STRENGTH SHALL BE 37.9 MPa @ 7 DAYS.
4. CEMENT SHALL BE SULFATE RESISTANCE TYPE V CONFORMING TO ASTM C478. REINFORCEMENT SHALL DEFORMED STEEL BARS CONFORMING TO ASTM A615 GRADE 60.
6. CONCRETE SURFACES EXPOSED TO EARTH SHALL BE COATED WITH APPROVED BITUMINOUS MATERIAL.
7. MANHOLE COVER SHALL BE 45Kg HEAVY DUTY CAST IRON. ASTM A-48 CLASS 30/35. H-20 PER AASHTO HB 14.
8. MANHOLE SHALL HAVE SUMP HOLES.
9. MANHOLE SHALL BE EQUIPPED WITH PULLING EYES OR PULLING IRON.
10. MANHOLE SHALL HAVE BRACKETS AND BRACKETS SUPPORTS.
11. MANHOLE SHALL HAVE CAST IRON COVERS.



SECTION B-B NORTH WALL
SCALE: NTS



SECTION C-C
SCALE: NTS



ISOMETRIC VIEW
SCALE: NTS



REPUBLIC OF THE PHILIPPINES
DEPARTMENT OF INFORMATION AND
COMMUNICATIONS TECHNOLOGY

PROJECT TITLE:	PREPARED BY:	APPROVED BY:	SHEET CONTENT/S:	SHEET NO.:
DICT NATIONAL BROADBAND PROGRAM	HONESTO D. HIZO Consultant		DICT PROPOSED MANHOLE DETAILS (TYPE B)	1 2
LOCATION:	DATE SIGNED:	DATE SIGNED:	SCALE: NOT TO SCALE	REV. 02