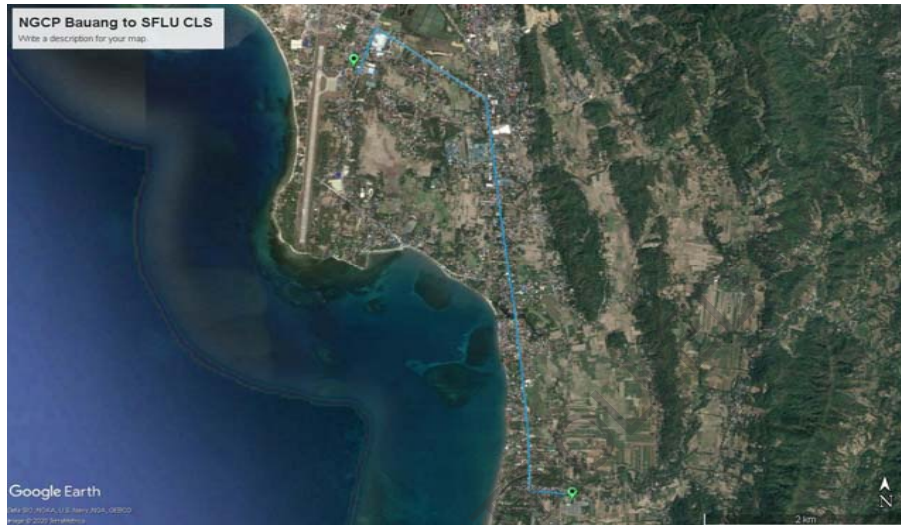
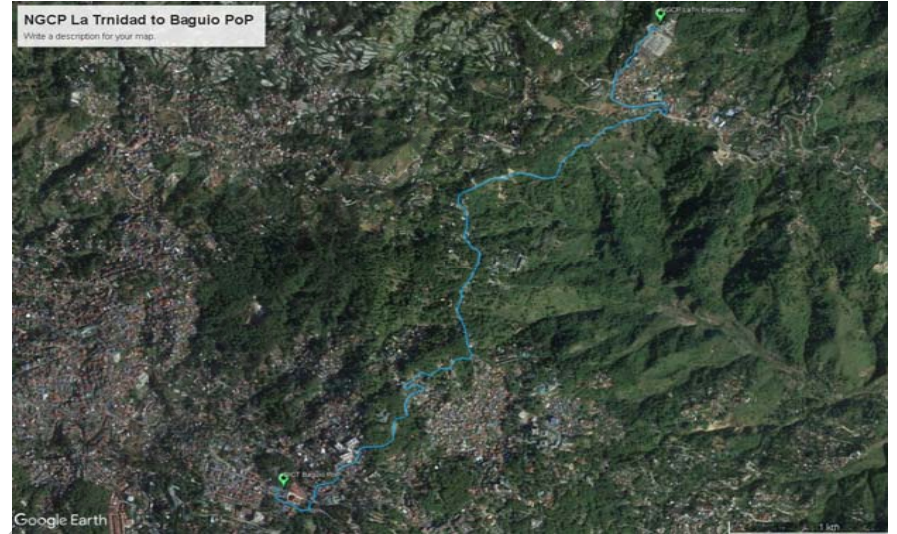


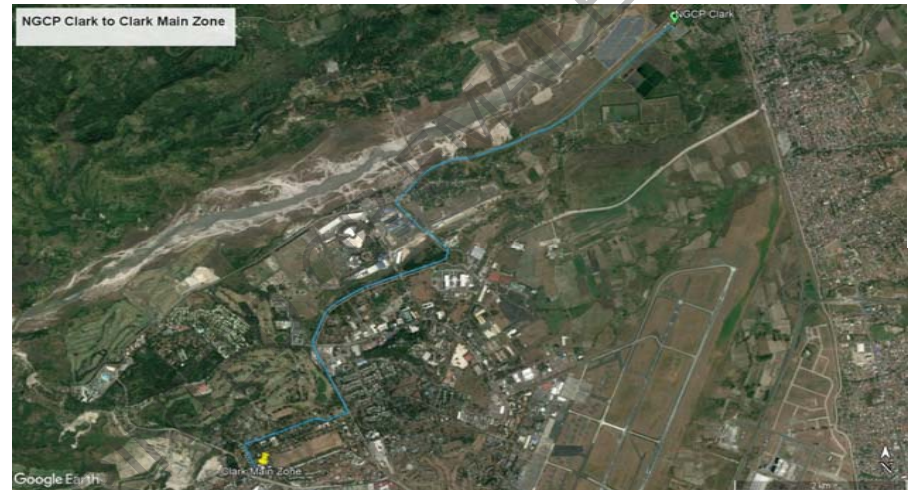
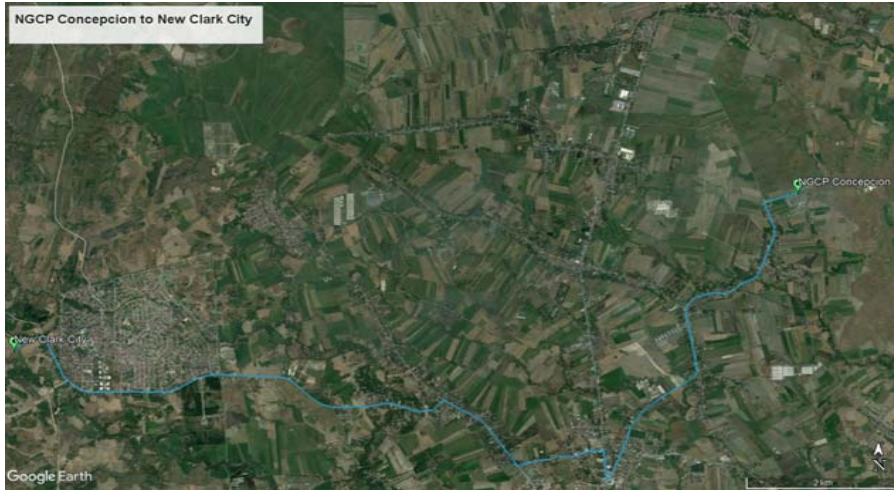
**FOC BUILD**

**C1.1 Middle Mile**

Segment No.	Point A		Point B		Province	Site	Coordinates	Province	Region	FOC Route Length (Km)		
	Site	Coordinates		Site							Coordinates	
		Latitude	Longitude								Latitude	Longitude
1	NGCP Bauang	16.557095°	120.326716°	La Union	DICT SFLU ICLS	16.599202°	120.306762°	La Union	Region 1	6.13		
2	DICT Roces	14.630189°	121.025137°	Metro Manila	NGCP Araneta (Dona Imelda )	14.618633°	121.015636°	Metro Manila	NCR	3		
3	NGCP Subic	14.817211°	120.299856°	Zambales	DICT NGDC-3	14.784353°	120.295458°	Zambales	Region 3	6.58		
4	NGCP La Trinidad	16.439973°	120.631432°	Benguet	DICT Baguio PoP	16.417134°	120.613892°	Benguet	Cordillera Administrative Region (CAR)	4.8		
5	DICT Baguio PoP	16.417134°	120.613892°	Benguet	BCDA Camp John Hay Management Center	16.402439°	120.616058°	Benguet	Cordillera Administrative Region (CAR)	5.23		
6	DICT SFLU ICLS	16.599202°	120.306762°	La Union	BCDA PPMC	16.6112°	120.2894°	La Union	Region 1	2.8		
7	NGCP Concepcion	15.378127°	120.616970°	Tarlac	BCDA NEW CLARK CITY (NGAC)	15.357836°	120.5222°	Tarlac	Region 3	15.1		
8	NGCP Clark	15.228928°	120.562168°	Pampanga	BCDA Clark Freeport Zone	15.178344°	120.517403°	Pampanga	Region 3	9.8		







UNCONTROLLED WHEN PRINTED

## FOC BUILD

### C1.2 Nodes/Sites with Cable Entrance Facility (CEF)

Item No.	Node/Site
	<b>NGCP</b>
1	Araneta (old name Doña Imelda)
2	Bacnotan
3	Balingueo
4	Bantay
5	Buang
6	Bolo (old name Kadampat)
7	Cabanatuan
8	Clark
9	Concepcion
10	Hermosa
11	Laoag
12	La Trinidad
13	Mexico
14	Nagsaag
15	Olongapo
16	San Esteban
17	San Jose 500kV
	<b>DICT</b>
18	Baler ICLS
19	SFLU ICLS
20	NGDC 3
21	Roces
22	Baguio PoP
	<b>BCDA</b>
23	Poropoint Management Corporation
24	John Hay Management Corporation
25	NGAC
26	Clark Free Port Zone

**Note:**

Provision for telecommunication poles and/or pole risers near or adjacent to service manhole as needed